



# MVCB Weekly News

15 January, 2013

[www.mvcitrus.org.au](http://www.mvcitrus.org.au)

**Murray  
Valley  
Citrus  
Board**

**58 Pine Ave  
Mildura VIC  
3500**

**PO Box 1384  
Mildura VIC  
3502**

**Ph: 03 5051 0500**

**Fax: 03 5021 1905**

## Qfly Update

Detections of Qfly within the Board's defined area are still low as evidenced by the samples received from Vic DPI last week. The Board encourages growers in the Buronga and Goodnight North outbreaks to continue to use Naturalure supplied by the Board as Qfly larvae has been found in these areas. Please ring Mary Cannard 0427 211 890 if more Naturalure is needed.

The table below sets out the number of Qfly adults and larvae found in the last three weeks.

Area	# Qfly	Action
Tooleybuc Town	Larvae in Apple	Extends outbreak
Tooleybuc Town	4	Extends outbreak
Goodnight Nth	12	Extends outbreak
Goodnight Nth	Larvae in Apricot	Extends outbreak
Buronga	10	Extends outbreak
Buronga	Larvae in Plum	Extends outbreak
Gol Gol	2	Extends outbreak
Buronga	1	No action, detection more than 1.5km from any current outbreak

There have also been a large number of Qfly detections in outbreak areas within the Sunraysia PFA but outside the Board's defined area.

A number of outbreaks have fulfilled the requirements for reinstatement for the domestic market and have been declared to have fruit fly freedom for the domestic market. These areas are: Tol Tol, Vinifera, Dareton North, Speewa, Beverford and Swan Hill.

## Two New Qfly Suspension Zones Declared in Victoria

To better regulate the movement of host produce from individual outbreak area, two new large Qfly suspension zones have been declared,

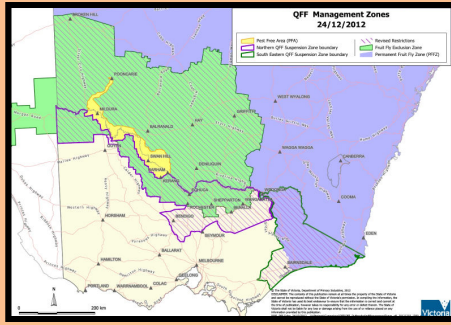
- The Northern Qfly Suspension Zone
- The South Eastern Qfly suspension zone

The new zones consolidate many of the individual outbreak area, to enable locally produced fruit to move freely within the zones and reduce the existing regulatory burden for Qfly affected Growers.

NOTE: The Sunraysia PFA is not within either of these new Qfly Suspension Zones. See map below for the new suspension zones.

Qfly host produce consigned within either of the new suspension zones does not need certification to move to another place within the suspension zones.

Qfly host produce can be consigned from the new Victorian suspension zones to the NSW FFEZ and the Sydney and Brisbane wholesale markets without certification for Qfly freedom/treatment.



Qfly host produce consigned from the new Victorian suspension zones to the PFA or the Melbourne Markets must be certified under a Plan Health Assurance Certificate issued in accordance with an Interstate Certification Assurance (ICA) accreditation, or a Plant Health Certificate issued by a DPI Inspector.

For further information, or to apply for ICA accreditation, please contact your local Plant

Standards Officer on 136 186.

### Visiting Fellow Seminar at Vic DPI

Victorian Department of Primary Industries will be holding a fruit tree physiology seminar on Wednesday 23 January, 2013. The seminar will commence at 10:30 am in the Melaleuca Room, DPI, Mildura, Cnr Koorlong Av and 11<sup>th</sup> Street, Irymple.

Guest speaker will be Professor Ted DeJong who has been involved in fruit and nut tree research with the Plant Science Department at UC Davies for over 30 years. His main research interest is to gain a better understanding of tree physiological and orchard management factors that control the carbon balance/budget of fruit and nut trees. His work has focused on both the supply and the demand side of the tree carbon balance equation including:

- The photosynthetic efficiency of tree leaves and orchard canopies
- Flowering and fruit set
- Fruit, shoot and root growth

An attempt to integrate these factors has led to the development of complex functional structural tree simulation models that are not only carbon budget models but also include an integrated understanding of tree architectural development.

RSVP to Kath Burt by Wednesday 16 January by phoning (03) 5051 4527. Lunch will be provided.

### Reminder That Carryover Cap on Murray System will not Apply until 30 June 2014

The Resource Manager has today declared that the risk of spill on the Murray system is low, meaning that the large volume of water held in spillable accounts is now available in entitlement holder's accounts.

This is a good opportunity to advise industry stakeholders, if you did not see the Minister's recent announcement, that the implementation of the end-of-season cap on carryover has been extended for 12 months on the Murray system. This gives Murray system irrigators an additional period to adjust their holdings to work within the new carryover limit. On the Murray, the end of season carryover cap will now come into effect on 30 June 2014.

A copy of the Minister's media release is available on the [water register website](#). The fact sheet on the new limit on carryover, and other information on the website, has been updated accordingly. Please note that the cap on carryover will still come into effect on the Goulburn and Campaspe systems on 30 June 2013 at the end of the current season.

### New Limits on Allocation Trade From NSW Come Into Effect

Please also note that the limits on allocation trade from New South Wales to Victoria, announced by the Minister for Water in November 2012, came into effect on Thursday, 10 January 2013. Net trade from New South Wales to Victoria is subject to a spill-risk limit (currently 200 GL) and a 200 GL annual limit, which is still largely available. You can track the status of these limits at

<http://waterregister.vic.gov.au/Public/Reports/InterValley.aspx>. The Resource Manager will review the spill risk limit monthly and make the next announcement on 15 February 2013.